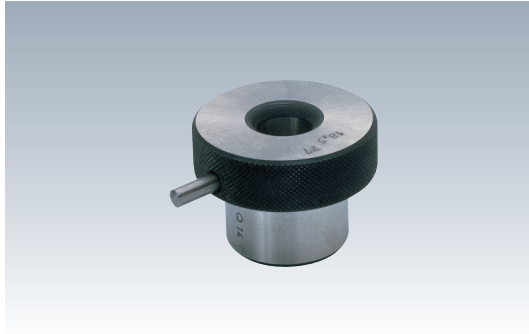


ヘッド付ドリルブッシュ

RoHS対応

ERON®

HEAD TYPE DRILL BUSHES No.E-1325



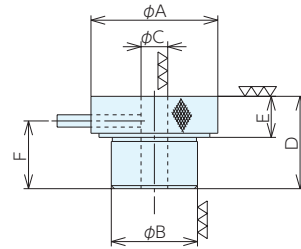
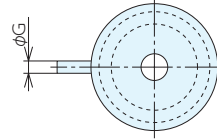
材質 SCM420

熱処理 焼入 HRC60

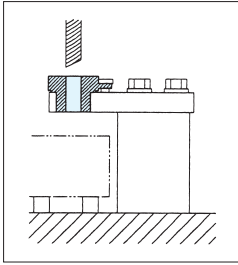
表面処理 黒染め

- 正確な穴開け作業を行うためのドリルやリーマーをガイドするブッシュです。
- 回り止め付き。

[▽.▽▽▽]



■使用例



■仕様・価格表

* 在庫限りで廃番

オーダーNo.	No.	穴径(φ)	A	B ^{m6}	C ^{F7}	D	E	F	G	価格
* 125225	11402- 2.8 - 8	2.8	15.7	8	2.8	20	9.9	15.4	2.5	700
* 125226	11402- 2.9 - 8	2.9	15.7	8	2.9	20	9.9	15.4	2.5	700
* 125228	11402- 3.2 - 8	3.2	15.7	8	3.2	20	9.9	15.4	2.5	700
* 125230	11402- 3.7 - 8	3.7	15.7	8	3.7	20	9.9	15.4	2.5	700
* 125231	11402- 3.9 - 8	3.9	15.7	8	3.9	20	9.9	15.4	2.5	700
* 125232	11402- 4.0 - 8	4.0	15.7	8	4.0	20	9.9	15.4	2.5	700
* 125234	11402- 4.5 -15	4.5	25.7	15	4.5	28	11.9	22.6	3	700
* 125237	11402- 5.3 -15	5.3	25.7	15	5.3	28	11.9	22.6	3	700
* 125238	11402- 5.5 -15	5.5	25.7	15	5.5	28	11.9	22.6	3	700
* 125239	11402- 5.8 -15	5.8	25.7	15	5.8	28	11.9	22.6	3	700
* 125240	11402- 6.0 -15	6.0	25.7	15	6.0	28	11.9	22.6	3	700
* 125241	11402- 6.4 -15	6.4	25.7	15	6.4	28	11.9	22.6	3	700
* 125242	11402- 6.6 -15	6.6	25.7	15	6.6	28	11.9	22.6	3	700
* 125244	11402- 7.0 -15	7.0	25.7	15	7.0	28	11.9	22.6	3	700
* 125245	11402- 7.4 -15	7.4	25.7	15	7.4	28	11.9	22.6	3	700
* 125246	11402- 7.8 -15	7.8	25.7	15	7.8	28	11.9	22.6	3	700
* 125248	11402- 8.4 -15	8.4	25.7	15	8.4	28	11.9	22.6	3	700
* 125249	11402- 8.5 -15	8.5	25.7	15	8.5	28	11.9	22.6	3	700
* 125250	11402- 8.9 -15	8.9	25.7	15	8.9	28	11.9	22.6	3	700
* 125252	11402- 9.5 -15	9.5	25.7	15	9.5	28	11.9	22.6	3	700
* 125253	11402- 9.8 -15	9.8	25.7	15	9.8	28	11.9	22.6	3	700
* 125255	11402-10.0 -26	10.0	40	26	10.0	36	15.8	26.8	5	700
* 125256	11402-10.25-26	10.75	40	26	10.25	36	15.8	26.8	5	700
* 125257	11402-10.4 -26	10.4	40	26	10.4	36	15.8	26.8	5	700
* 125259	11402-11.0 -26	11.0	40	26	11.0	36	15.8	26.8	5	700
* 125260	11402-11.4 -26	11.4	40	26	11.4	36	15.8	26.8	5	700
* 125261	11402-11.8 -26	11.8	40	26	11.8	36	15.8	26.8	5	700
* 125262	11402-12.0 -26	12.0	40	26	12.0	36	15.8	26.8	5	700
* 125263	11402-13.0 -26	13.0	40	26	13.0	36	15.8	26.8	5	700
* 125264	11402-13.8 -26	13.8	40	26	13.8	36	15.8	26.8	5	700

仕様・価格表

* 在庫限りで廃番

オーダーNo.	No.	穴径(φ)	A	Bm6	CF7	D	E	F	G	価格
* 125265	11402-14.0 -26	14.0	40	26	14.0	36	15.8	26.8	5	700
* 125266	11402-14.5 -26	14.5	40	26	14.5	36	15.8	26.8	5	700
* 125267	11402-15.0 -26	15.0	40	26	15.0	36	15.8	26.8	5	700
* 125268	11402-15.5 -26	15.5	40	26	15.5	36	15.8	26.8	5	700
* 125269	11402-15.75-26	15.75	40	26	15.75	36	15.8	26.8	5	700
* 125270	11402-16.0 -26	16.0	40	26	16.0	36	15.8	26.8	5	700
* 125271	11402-16.5 -26	16.5	40	26	16.5	36	15.8	26.8	5	700
* 125272	11402-17.0 -26	17.0	40	26	17.0	36	15.8	26.8	5	700
* 125273	11402-17.5 -26	17.5	40	26	17.5	36	15.8	26.8	5	700
* 125274	11402-17.75-26	17.75	40	26	17.75	36	15.8	26.8	5	700
* 125275	11402-18.0 -26	18.0	40	26	18.0	36	15.8	26.8	5	700
* 125276	11402-13.0 -42	13.0	61.8	42	13.0	45	20	33	6	700
* 125277	11402-18.5 -42	18.5	61.8	42	18.5	45	20	33	6	700
* 125278	11402-19.0 -42	19.0	61.8	42	19.0	45	20	33	6	700
* 125279	11402-19.75-42	19.75	61.8	42	19.75	45	20	33	6	700
* 125280	11402-20.0 -42	20.0	61.8	42	20.0	45	20	33	6	700
* 125281	11402-21.0 -42	21.0	61.8	42	21.0	45	20	33	6	700
* 125282	11402-21.25-42	21.25	61.8	42	21.25	45	20	33	6	700
* 125283	11402-21.75-42	21.75	61.8	42	21.75	45	20	33	6	700
* 125284	11402-22.0 -42	22.0	61.8	42	22.0	45	20	33	6	700
* 125285	11402-24.0 -42	24.0	61.8	42	24.0	45	20	33	6	700
* 125286	11402-24.5 -42	24.5	61.8	42	24.5	45	20	33	6	700
* 125287	11402-24.75-42	24.75	61.8	42	24.75	45	20	33	6	700
* 125288	11402-25.0 -42	25.0	61.8	42	25.0	45	20	33	6	700
* 125289	11402-25.75-42	25.75	61.8	42	25.75	45	20	33	6	700
* 125290	11402-26.0 -42	26.0	61.8	42	26.0	45	20	33	6	700
* 125291	11402-26.5 -42	26.5	61.8	42	26.5	45	20	33	6	700
* 125292	11402-26.75-42	26.75	61.8	42	26.75	45	20	33	6	700
* 125293	11402-27.75-42	27.75	61.8	42	27.75	45	20	33	6	700
* 125294	11402-28.0 -42	28.0	61.8	42	28.0	45	20	33	6	700
* 125295	11402-29.75-42	29.75	61.8	42	29.75	45	20	33	6	700
* 125296	11402-30.0 -42	30.0	61.8	42	30.0	45	20	33	6	700
* 125297	11402-13.0 -62	13.0	85	62	13.0	55	20.1	42.7	6	1,050
* 125298	11402-31.0 -62	31.0	85	62	31.0	55	20.1	42.7	6	1,050
* 125299	11402-31.5 -62	31.5	85	62	31.5	55	20.1	42.7	6	1,050
* 125300	11402-31.75-62	31.75	85	62	31.75	55	20.1	42.7	6	1,050
* 125301	11402-32.0 -62	32.0	85	62	32.0	55	20.1	42.7	6	1,050
* 125302	11402-33.0 -62	33.0	85	62	33.0	55	20.1	42.7	6	1,050
* 125303	11402-34.5 -62	34.5	85	62	34.5	55	20.1	42.7	6	1,050
* 125304	11402-35.0 -62	35.0	85	62	35.0	55	20.1	42.7	6	1,050
* 125305	11402-35.5 -62	35.5	85	62	35.5	55	20.1	42.7	6	1,050
* 125306	11402-37.0 -62	37.0	85	62	37.0	55	20.1	42.7	6	1,050
* 125307	11402-37.5 -62	37.5	85	62	37.5	55	20.1	42.7	6	1,050
* 125308	11402-39.0 -62	39.0	85	62	39.0	55	20.1	42.7	6	1,050
* 125309	11402-39.5 -62	39.5	85	62	39.5	55	20.1	42.7	6	1,050
* 125310	11402-40.0 -62	40.0	85	62	40.0	55	20.1	42.7	6	1,050
* 125311	11402-41.5 -62	41.5	85	62	41.5	55	20.1	42.7	6	1,050
* 125312	11402-42.0 -62	42.0	85	62	42.0	55	20.1	42.7	6	1,050
* 125313	11402-43.0 -62	43.0	85	62	43.0	55	20.1	42.7	6	1,050
* 125314	11402-44.5 -62	44.5	85	62	44.5	55	20.1	42.7	6	1,050
* 125315	11402-45.0 -62	45.0	85	62	45.0	55	20.1	42.7	6	1,050
* 125316	11402-47.5 -62	47.5	85	62	47.5	55	20.1	42.7	6	1,050